



BOWLING GREEN HIGH SCHOOL

Bowling Green High School, established in 1908, is the second oldest high school in Kentucky, graduating its first class in 1912. The school is guided by a tradition of excellence and commitment to student success. Bowling Green High School has a diverse, highly-motivated student body with over 78% of each year's graduating class seeking post-secondary education and 5% pursuing vocational education.

1801 Rockingham Lane
Bowling Green, Kentucky 42104
(270) 746-2300
FAX: (270) 746-2305
www.bgreen.kyschools.us
Test Code: 180-247

- In 2008, 2009 and 2010 Bowling Green High School earned a Silver Medal from **U.S. News & World Report**, ranking among the top high schools nationwide.

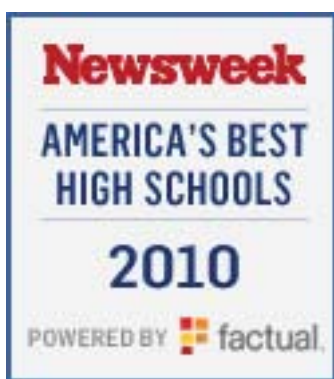
- In 2008, 2009, and 2010 Bowling Green High School made the list of America's top high schools as ranked by **Newsweek** magazine.

- The **National Merit Scholarship Program** recognized thirteen seniors in the fall of 2010. Five were named National Merit Semifinalists, Five Commended Students, and Three National Achievement Scholars.

- In the spring of 2009, more than one in four BGHS students participated in **Advanced Placement** exams, and 62% of those exams resulted in a score of 3 or higher, qualifying the students for college credit. Currently, 38% of the student body is enrolled in at least one Advanced Placement class.

- In 2009, as juniors, the Class of 2010 scored an average **ACT Composite** of 19.5. One year later, the same students improved in every academic category to an average composite of 20.6.

- The **Class of 2010** was represented by 240 graduates, including 45 Honor Graduates and 16 Commonwealth Diploma recipients. Plus, the class earned over \$7.79 Million in scholarship offers from 56 colleges and universities.



DEMOGRAPHICS:

Enrollment: **1,077**
Pupil/Teacher Ratio: **14:1**
Free/Reduced Lunch: **43%**
Minority Students: **32.5%**
Limited English Proficiency: **5.3%**



Administration:

Gary Fields, Principal
Virgil Livers, Assistant Principal
Monyonna Shive, Assistant Principal

J. C. Rowan, Counselor
Leah Krisher, Counselor
Karen Swiney, Counselor
Laura Lawson, Counselor

Advanced Placement Courses:

AP Biology
AP Calculus
AP Statistics
AP Chemistry
AP Physics
AP Music Theory
AP English Language and Composition
AP Literature and Composition
AP French Language
AP Spanish Language
AP Psychology
AP United States Government and Politics
AP Comparative Government and Politics
AP United States History
AP European History
AP World History
AP Human Geography

Vocational Programs:

Business / Marketing
Construction Technology
Human Services
Communication-Multimedia
Health Science
Transportation

Athletics:

Football
Boys/Girls Soccer
Boys/Girls Cross Country
Boys/Girls Golf
Boys/Girls Track
Boys/Girls Swimming
Boys/Girls Basketball
Boys/Girls Tennis
Baseball
Softball
Volleyball
Co-Ed Cheerleading

Academic Scale / Rank:

Classes are ranked at the end of each school year using numerical percentiles. A traditional GPA is also calculated using a 4.0 scale. Three points are added to each semester for AP courses and 2 points are added for Pre-AP courses.

A	90 - 100	4.0
B	80 - 89	3.0
C	70 - 79	2.0
D	60 - 69	1.0
F	00 - 59	0.0

Clubs:

Art
BETA
CEC
DECA
Disc Golf
Discussion
Drama/Speech
ESL / International
FBLA
FCA
FCCLA
FEA
Foreign Language
Hi-Y
HOSA
Mountain Biking
NHS
Prom
Purple BIGS
Renaissance Team
JROTC
Science/Environmental
Student Government
STLP
VICA / Skills USA
Young Democrats
Young Republicans